

# ACTIONS MARIE CURIE

7<sup>e</sup> PCRD : « PEOPLE »



*Stéphane AYMARD, PCN Ressources Humaines et Mobilité du 7<sup>e</sup> PCRD*

# ESPACE EUROPEEN DE LA RECHERCHE



# CLASSEMENT - SHANGHAI 2007 (U. JiaoTong)

*Academic Ranking of  
World Universities  
2007*

## Top 500 World Universities (1-99)

World Rank	Institution*	Region	Regional Rank	Country	National Rank	Score on Alumni	Score on Award	Score on HiCi	Score on N&S	Score on SCI	Score on Size	Total Score
1	<a href="#">Harvard Univ</a>	Americas	1	USA	1	100	100	100	100	100	73	100
2	<a href="#">Stanford Univ</a>	Americas	2	USA	2	42	78.7	86.1	69.6	70.3	65.7	73.7
3	<a href="#">Univ California - Berkeley</a>	Americas	3	USA	3	72.5	77.1	67.9	72.9	69.2	52.6	71.9
4	<a href="#">Univ Cambridge</a>	Europe	1	UK	1	93.6	91.5	54	58.2	65.4	65.1	71.6
5	<a href="#">Massachusetts Inst Tech (MIT)</a>	Americas	4	USA	4	74.6	80.6	65.9	68.4	61.7	53.4	70.0
6	<a href="#">California Inst Tech</a>	Americas	5	USA	5	55.5	69.1	58.4	67.6	50.3	100	66.4
7	<a href="#">Columbia Univ</a>	Americas	6	USA	6	76	65.7	56.5	54.3	69.6	46.4	63.2
8	<a href="#">Princeton Univ</a>	Americas	7	USA	7	62.3	80.4	59.3	42.9	46.5	58.9	59.5
9	<a href="#">Univ Chicago</a>	Americas	8	USA	8	70.8	80.2	50.8	42.8	54.1	41.3	58.4
10	<a href="#">Univ Oxford</a>	Europe	2	UK	2	60.3	57.9	46.3	52.3	65.4	44.7	56.4

# CLASSEMENT - TIMES 2006

Rank	School Name	Country
1	Harvard University	United States
2	University of Cambridge	United Kingdom
3	University of Oxford	United Kingdom
4=	Massachusetts Institute of Technology	United States
4=	Yale University	United States
6	Stanford University	United States
7	California Institute of Technology	United States
8	University of California, Berkeley	United States
9	Imperial College London	United Kingdom
10	Princeton University	United States
11	University of Chicago	United States
12	Columbia University	United States
13	Duke University	United States
14	Peking University	China
15	Cornell University	United States
16	Australian National University	Australia
17	London School of Economics and Political...	United Kingdom
18	Ecole Normale Supérieure	France
19=	National University of Singapore	Singapore
19=	University of Tokyo	Japan
21	McGill University	Canada
22	University of Melbourne	Australia
23	Johns Hopkins University	United States
24	ETH Zurich	Switzerland
25	University College London (UCL)	United Kingdom
26	University of Pennsylvania	United States
27	University of Toronto	Canada
28	Tsing Hua University	China
29=	Kyoto University	Japan
29=	University of Michigan	United States
31	University of California, Los Angeles	United States
32	University of Texas at Austin	United States

# CRITERES DES CLASSEMENTS

Criteria	Indicator	Brief Description	Weight*
Research Quality	Peer Review	Composite score drawn from peer review (which is divided into five subject areas). 3,703 responses.	40%
	Citations per Faculty	Score based on research performance factored against the size of the research body	20%
Graduate Employability	Recruiter Review	Score based on responses to recruiter survey. 738 responses	10%
International Outlook	International Faculty	Score based on proportion of international faculty	5%
	International Students	Score based on proportion of international students	5%
Teaching Quality	Student Faculty	Score based on student/faculty ratio	20%

Critères	Indicateurs	Pondération
Qualité de l'éducation	Nombre de <a href="#">prix Nobel</a> et de <a href="#">médailles Fields</a> parmi les anciens élèves <sup>2</sup>	10 %
Qualité de l'institution	Nombre de <a href="#">prix Nobel</a> et de <a href="#">médailles Fields</a> parmi les chercheurs <sup>3</sup>	20 %
	Nombre de chercheurs les plus cités dans leurs disciplines	20 %
Publications	Articles publiés dans <a href="#">Nature</a> et <a href="#">Science</a> entre 2000 et 2004 <sup>4</sup>	20 %
	Articles indexés dans <a href="#">Science Citation Index</a> , et <a href="#">Arts &amp; Humanities Citation Index</a> <sup>5</sup>	20 %
Taille de l'institution	Performance académique au regard de la taille de l'institution <sup>6</sup>	10 %

# PROGRAMMES DU 7e PCRDT

**50.5 G€ (sur 7 ans)**

COOPERATION : Collaborative research (32.3 G€)

IDEAS : Frontier Research (7.5 G€)

CAPACITIES : Research Infrastructures (4.2 G€)

PEOPLE : Marie Curie actions / Mobility (4.7 G€)

JRC : Joint Research Centre (1.8 G€)

+ EURATOM\*

# PRECEDENTES ACTIONS « MARIE CURIE »

3e PCRDT (1990-1994) : Human Capital and Mobility (HCM)

4e PCRDT (1994-1998) : Training and Mobility of Researchers (TMR)

5e PCRDT (1998-2002) : Improving Human Research Potential...

6e PCRDT (2002-2006) : Human Resources and Mobility (HRM)

7e PCRDT (2007-2013) : People



# EVOLUTION DU FINANCEMENT

6e PCRDT 2002-2006 (4 ans) : **1,8 Md€** soit **0,45 Md€** par an

7e PCRDT 2007-2013 (7 ans) : **4,7 Md€** soit **0,67 Md€** par an

Augmentation : **49 %**

*Les premières années auront un financement plus faible que les dernières années pour une montée en puissance de 2007 à 2013*

# EXEMPLES DE PARTICIPANTS

**Entreprises (PME, Start up...):** Mutabilis, EDF, Alcatel, Novalyst, Lafarge, Rhodia, Oxand, Renault, Coventy, Coatex, DGTec, ImaginEyes, Bayer Cropscience...

**Organismes :** INRA, IRD, INSERM, INRIA, CEA, I. Pasteur, I. Curie, CNRS, IFP, IPG, IFREMER...

**Universités :** Paris 6, Paris 11, Strasbourg 1, Grenoble 1, Toulouse 3, Lyon 1, Bordeaux 1...(40 universités)  
*jusqu'à une trentaine de projets pour certaines !*

**Ecoles :** Centrale, ENPC, GET, Polytechnique, ENS, ENITA, E. Architecture,

*+ Associations, Cabinets, Personnes Physiques...*

# DEFINITIONS DE LA RECHERCHE

Spécialistes travaillant à la conception ou à la création de connaissances, de produits, de procédés, de méthodes et de systèmes nouveaux et à la gestion des projets concernés.

Activités dans les domaines de la «recherche **fondamentale**», de la «recherche **stratégique**», de la «recherche **appliquée**», du «développement **expérimental**» et du «**transfert des connaissances**», y compris **l'innovation** et les activités de **conseil**, de **supervision** et d'enseignement, la gestion de la connaissance et des droits de **propriété intellectuelle**, **l'exploitation des résultats** de la recherche ou le **journalisme scientifique**.

**Chercheurs en début de carrière**: chercheurs au cours des quatre premières années (ETP) de leur activité de recherche.

**Chercheurs expérimentés**: chercheurs ayant au moins quatre ans d'expérience dans la recherche (ETP) après avoir obtenu un diplôme universitaire leur donnant accès aux études de doctorat, ou chercheurs déjà titulaires d'un doctorat.

# DEFINITIONS DE LA RECHERCHE

**Recherche fondamentale:** activité visant à un élargissement des connaissances scientifiques et techniques non liées à des objectifs industriels ou commerciaux (finançable à 100%)

**Recherche industrielle:** recherche planifiée visant à acquérir de nouvelles connaissances, l'objectif étant que ces connaissances puissent être utiles pour mettre au point de nouveaux produits, procédés ou services ou entraîner une amélioration (finançable à 50% ou 60% si PME)

**Développement préconcurrentiel:** concrétisation des résultats de la recherche industrielle pour des produits, procédés ou services nouveaux, modifiés ou améliorés, qu'ils soient destinés à être vendus ou utilisés, y compris la création d'un premier prototype qui ne pourrait pas être utilisé commercialement (finançable à 25% ou 35% si PME)

- Comprend la formulation conceptuelle, le dessin, les projets de démonstration initiale ou les projets pilotes, à condition qu'ils ne puissent pas être convertis ou utilisés pour des applications industrielles ou une exploitation commerciale.
- Ne comprend pas les modifications de routine ou périodiques même si ces modifications peuvent représenter des améliorations.

# PRINCIPES GENERAUX

Mobilité transnationale

Evaluation par des experts avec des critères précis

Liberté dans le choix du domaine de recherche

Recrutement équitable, à temps plein, pas d 'âge limite

"Priorités" pour les PME, les nouveaux Etats Membres,  
les femmes, l'interdisciplinarité...

Aspects éthiques, synergies, applications potentielles...

# REGLES DE MOBILITE (Bourses)

- 1) Mobilité transnationale
- 2) Ne pas avoir résidé dans le pays d'accueil pendant plus de 12 mois au cours des 3 années précédentes
- 3) Mobilité possible dans le pays d'origine si plusieurs nationalités et résidence dans un autre pays pendant au moins 5 ans
- 4) Mobilité possible dans le pays d'origine si résidence dans un pays tiers pendant au moins 3 ans
- 5) Mobilité ouverte aux chercheurs des pays tiers ayant résidé dans un état membre pendant au moins 3 ans (« assimilés »)

*Exceptions pour les organisations internationales*

# MODALITES DE FINANCEMENT

Dérogation du PCRDT : 100%

Salaires et charges (+ coefficients correcteurs)

Indemnités (expatriation, carrière...)

Frais de laboratoires

Frais de missions (conférences)

Frais de formation

Frais d'organisation et communication (web, réunions...)

Frais de publications/diffusion des résultats

Frais de gestion (3% ou 7%)

Frais indirects (Overheads : 10%)

Forfait:  
X € par  
chercheur  
par mois

# LES SALAIRES ET INDEMNITES

**Chercheurs en Début de Carrière : 33 800 € par an**

**Chercheurs Expérimentés : 52 000 € par an**

**Chercheurs Expérimentés (>10 ans) : 78 000 € par an**

**Salaire Net = 45% de ces sommes  
(1300 € - 2000 € et 3000 € mensuels)**

**Indemnité d'expatriation : 500 € ou 800 € mensuels "nets"  
(selon charges de famille)**

**Coefficients correcteurs (FR=104.4)**

**Indemnité de voyage (1 par an) : 250 € à 2500 € selon distance**

**Indemnité de développement de carrière (1 par chercheur): 2000 €**

**France :**

- Allocation Recherche = 27 000**
- MCF = 36 000 à 64 000**
- MCF HC et PR2 = 52 000 à 76 000**
- PR1 = 76 000 à 92 000**
- PR0 = 92 000 à 104 000**

	0-4 years	5-7 years	8-10 years	11-15 years	> 15 years
<b>Austria</b>	35.836,00	48.412,00	60.988,00	73.564,00	86.140,00
<b>Belgium</b>	26.536,00	39.547,00	52.558,00	65.569,00	78.580,00
<b>Bulgaria</b>	1.959,93	2.618,26	3.276,59	3.934,92	4.593,25
<b>Croatia</b>	8.953,20	12.606,00	16.258,80	19.911,60	23.564,40
<b>Cyprus</b>	20.378,60	31.125,60	41.872,60	52.619,60	63.366,60
<b>Czech republic</b>	9.880,50	14.253,50	18.626,50	22.999,50	27.372,50
<b>Denmark</b>	42.527,90	52.156,80	61.785,70	71.414,60	81.043,50
<b>Estonia</b>	6.712,20	9.224,00	11.735,80	14.247,60	16.759,40
<b>Finland</b>	26.101,70	33.582,40	41.063,10	48.543,80	56.024,50
<b>France</b>	28.191,00	39.895,00	51.599,00	63.303,00	75.007,00
<b>Germany</b>	24.515,00	37.870,00	51.225,00	64.580,00	77.935,00
<b>Greece</b>	12.112,00	18.441,30	24.770,60	31.099,90	37.429,20
<b>Hungary</b>	9.785,20	12.539,60	15.294,00	18.048,40	20.802,80
<b>Ireland</b>	22.715,30	41.081,30	59.447,30	77.813,30	96.179,30
<b>Iceland</b>	41.418,00	46.102,00	50.786,00	55.470,00	60.154,00
<b>Israel</b>	13.412,50	22.845,70	38.883,70	54.921,70	70.959,70
<b>Italy</b>	12.336,50	22.249,10	32.161,70	42.074,30	51.986,90
<b>Latvia</b>	5.354,70	7.784,40	10.214,10	12.643,80	15.073,50
<b>Liechtenstein</b>	ND	ND	ND	ND	ND
<b>Lithuania</b>	10.477,60	12.107,60	13.737,60	15.367,60	16.997,60
<b>Luxembourg</b>	36.110,00	48.842,00	61.574,00	74.306,00	87.038,00
<b>Malta</b>	24.543,00	26.137,00	27.731,00	29.325,00	30.919,00
<b>Norway</b>	51.398,60	56.965,20	62.531,80	68.098,40	73.665,00
<b>Poland</b>	6.659,10	9.346,30	12.033,50	14.720,70	17.407,90
<b>Portugal</b>	7.999,00	17.299,50	26.600,00	35.900,50	45.201,00
<b>Romania</b>	2.595,87	4.312,17	6.028,47	7.744,77	9.461,07
<b>Slovakia</b>	5.546,30	7.225,30	8.904,30	10.583,30	12.262,30
<b>Slovenia</b>	15.852,40	22.440,40	29.028,40	35.616,40	42.204,40
<b>Spain</b>	13.987,50	22.957,70	31.927,90	40.898,10	49.868,30
<b>Sweden</b>	27.632,00	42.028,00	56.424,00	70.820,00	85.216,00
<b>Netherlands</b>	25.646,00	41.273,00	56.900,00	72.527,00	88.154,00
<b>Switzerland</b>	39.559,00	59.990,00	80.421,00	100.852,00	121.283,00
<b>Turkey</b>	6.993,30	11.374,00	15.754,70	20.135,40	24.516,10
<b>United Kigdom</b>	24.607,0	39.090,0	53.573,0	68.056,0	82.539,0

19 648 € - 27 627 € - 35 728 € - 44 018 € - 52 599 €

# PROGRAMME "PEOPLE"

1 - Initial training of researchers : 40%

**ITN**

2 - Life-long training and career development: 25%-30%

**IEF + ERG + COFUND**

3 - Industry-Academia partnerships and pathways: 5%-10%

**IAPP**

4 - The international dimension: 25%-30%

**IOF + IIF + IRG + Diasporas (era-link)**

5 - Specific Actions: 1%

**NIGHT + AWARDS + ERA-MORE + NCP**

**Mobility Centres + Studies (Mobility Data, Taxation, Careers) + Communication**



# 1 - Initial training of researchers

# ITN

## Initial Training Networks

### PUBLIC

Chercheurs en début de carrière (ex: Doctorants)  
Chercheurs expérimentés (1 à 2 ans)  
Mobilité intra-européenne + Pays Tiers

### CANDIDATS

Réseau de laboratoires (voire entité seule)  
Public/Privé, Complémentarité, Interdisciplinarité...

### MODALITES

Formation à et par la Recherche  
Recrutement de chercheurs en début de carrière  
Recrutement de chercheurs invités (Chaires)  
Séjours de 3 à 36 mois  
Conférences / Séminaires  
Reconnaissance mutuelle  
Modules complémentaires: PI, Com...

# ITN

## Initial Training Networks

BUDGET 2007  
240 Millions d'Euros (80 réseaux)

DATE DE CLOTURE  
7 Mai 2007

### FINANCEMENTS

Recrutements (Salaires, Indemnités)  
Dépenses des chercheurs: 300 €/m ou 600 €/m  
*(accès conférences, frais de labos, formations...)*  
Dépenses du réseau: 600 €/m  
*(web, réunions, visites...)*  
Dépenses pour des conférences : 300 €/j  
*(conférenciers, locations, publications...)*  
Management (7%), Overheads (10%)



## 2 - Life-long training and career development

# IEF

## Intra European Fellowships

### PUBLIC

Chercheurs expérimentés (profil "more senior")  
Mobilité intra-européenne

### CANDIDATS

Laboratoire d'accueil (Public/Privé)  
Chercheur

### MODALITES

Formation à et par la Recherche  
Projet de recherche validé  
Séjours de 12 à 24 mois

# IEF

## Intra European Fellowships

BUDGET 2007  
72 Millions d'Euros (400 bourses)

DATE DE CLOTURE  
14 Aout 2007

FINANCEMENTS  
Recrutements (Salaires, Indemnités)  
Dépenses des chercheurs: 500 €/m ou 800 €/m  
*(accès conférences, frais de labos, formations...)*  
Management (3%), Overheads (10%)

# ERG

## European Reintegration Grants

**PUBLIC**

Chercheurs expérimentés (Anciens Boursiers Marie Curie)

**CANDIDATS**

Laboratoire d'accueil (Public/Privé)

Chercheur

**MODALITES**

Projet de recherche

Durée 24 à 36 mois

# ERG

## European Reintegration Grants

BUDGET 2007  
9.5 Millions d'Euros

DATE DE CLOTURE  
En continu

Candidater entre 6 mois et 12 mois avant la fin de la Bourse

FINANCEMENTS  
Somme forfaitaire : 15 000 €/an  
*(Salaires, frais de labos, missions...)*  
Management (3%), Overheads (10%)

# COFUND

## Co-funding of Programmes

**PUBLIC**

Chercheurs expérimentés

**CANDIDATS**

Institutions offrant des bourses pour la mobilité internationale

**MODALITES**

Programmes de mobilité Entrante/Sortante/Retour

Appels ouverts à l'international (publicité)

Sélection transparente

# COFUND

## Co-funding of Programmes

BUDGET 2007  
65 Millions d'Euros

DATE DE CLOTURE  
19 février 2008

FINANCEMENTS  
Co-financement de 40%



## 3 - Industry-Academia partnerships and pathways

# IAPP

## Industry-Academia Partnerships Pathways

### PUBLIC

Chercheurs en début de carrière  
Chercheurs expérimentés

### CANDIDATS

Laboratoire d'accueil Public  
Entreprise Privée

### MODALITES

Projet de recherche

Echanges de personnels (2 à 24 mois)

Recrutement de chercheurs expérimentés extérieurs au Partenariat  
Conférences, Séminaires, Matériels (PME)

# IAPP

## Industry-Academia Partnerships Pathways

BUDGET 2007  
38.4 Millions d'Euros (40 projets)

DATE DE CLOTURE  
31 Mai 2007

FINANCEMENTS

- Remplacements (Salaires, Indemnités)
- Dépenses du partenariat: 800 €/m  
*(web, réunions, visites...)*
- Dépenses pour des conférences : 300 €/j  
*(conférenciers, locations, publications...)*
- Management (3%), Overheads (10%)
- Matériels (PME) : maxi 10% du budget



## 4 - The international dimension

# IOF

## International Outgoing Fellowships

### PUBLIC

Chercheurs expérimentés (profil "more senior")  
Mobilité "sortante"

### CANDIDATS

Laboratoire d'accueil (Public/Privé)  
Chercheur

### MODALITES

Projet de recherche validé  
Séjours de 12 à 24 mois  
+ Phase de retour de 12 mois

# IOF

## International Outgoing Fellowships

BUDGET 2007  
24 Millions d'Euros (100 bourses)

DATE DE CLOTURE  
14 Aout 2007

FINANCEMENTS  
Recrutements (Salaires, Indemnités sauf phase Retour)  
Dépenses des chercheurs: 500 €/m ou 800 €/m  
*(accès conférences, frais de labos, formations...)*  
Management (3%), Overheads (10%)

# IIF

## Incoming International Fellowships

### PUBLIC

Chercheurs expérimentés (profil "more senior")  
Mobilité "entrante"

### CANDIDATS

Laboratoire d'accueil (Public/Privé)  
Chercheur

### MODALITES

Projet de recherche validé  
Séjours de 12 à 24 mois  
+ Phase de retour de 12 mois

# IIF

## Incoming International Fellowships

BUDGET 2007  
24 Millions d'Euros (100 bourses)

DATE DE CLOTURE  
14 Aout 2007

### FINANCEMENTS

Recrutements (Salaires, Indemnités)  
Dépenses des chercheurs: 500 €/m ou 800 €/m  
*(accès conférences, frais de labos, formations...)*  
Management (3%), Overheads (10%)  
Phase de retour : 15 000 € (forfait)

# IRG

## International Reintegration Grants

### PUBLIC

Chercheurs expérimentés  
Expatriés (Pays Tiers) depuis au moins 3 ans

### CANDIDATS

Laboratoire d'accueil (Public/Privé)  
Chercheur

### MODALITES

Projet de recherche  
Durée 24 à 48 mois

# IRG

## International Reintegration Grants

BUDGET 2007  
14.5 Millions d'Euros

DATE DE CLOTURE  
En continu

FINANCEMENTS  
Somme forfaitaire : 25 000 €/an  
*(Salaires, frais de labos, missions...)*  
Management (3%), Overheads (10%)



## 5 - Specific Actions

# NIGHT

## Researchers Night

### PUBLIC

Grand Public (Communauté scientifique...)

### CANDIDATS

Organismes assurant la promotion de la recherche

### MODALITES

Campagne d'information

Activités organisées pour la nuit des chercheurs

Etudes Evaluation/Impact

Soutien sur 7 mois maximum

# NIGHT

## Researcher's Night

BUDGET 2007  
3 Millions d'Euros

DATE DE CLOTURE  
3 avril 2007

FINANCEMENTS  
Subvention en fonction des coûts du projet

# AWARDS

## Marie Curie Awards

PUBLIC

Chercheurs expérimentés(Anciens Boursiers Marie Curie)

CANDIDATS

*Laboratoire d'accueil (Public/Privé)*

Chercheur

MODALITES

Participation à des actions de communication de la CE

# AWARDS

## Marie Curie Awards

BUDGET 2007  
0.25 Millions d'Euros

DATE DE CLOTURE  
29 mars 2007

FINANCEMENTS  
Subvention de 50 000 €

# IRSES

## Int. Research Staff Exchange Scheme

**PUBLIC**  
Chercheurs des laboratoires

**CANDIDATS**  
*Laboratoire(s) en Europe*  
+  
*Laboratoire(s) hors d'Europe*

**MODALITES**  
Séjours de chercheurs : 1 mois à 12 mois  
Les chercheurs conservent leurs salaires  
Projets de 24 à 48 mois

# IRSES

## Int. Research Staff Exchange Scheme

BUDGET 2007  
25 millions d'euros

DATE DE CLOTURE  
?

### FINANCEMENTS

Frais de séjour de 1800 euros par mois (pour le chercheur)  
Les laboratoires de pays hors UE et associés doivent apporter  
leurs financements

# TABLEAU RECAPITULATIF DES APPELS

ITN : 240 M€ (7 mai 2007)

IEF : 72 M€ (14 aout 2007)

ERG : 9.5 M€ (continu, 25 avril 2007)

COFUND : 65 M€ (19 février 2008)

IAPP : 38.4 M€ (31 mai 2007)

IOF : 24 M€ (14 aout 2007)

IIF : 24 M€ (14 aout 2007)

IRG : 14.5 M€ (continu, 25 avril 2007)

NIGHT : 3 M€ (3 avril 2007)

AWARDS : 0.25 M€ (29 mars 2007)

# LISTE DES PAYS « EUROPEENS »

## 27 Pays Membres

Allemagne  
Autriche  
Belgique  
Bulgarie  
Chypre  
Danemark  
Espagne  
Estonie  
Finlande  
France  
Grèce  
Hongrie  
Irlande  
Italie  
Lettonie  
Lituanie  
Luxembourg  
Malte  
Pays Bas  
Pologne  
Portugal  
Roumanie  
Royaume Uni  
Slovaquie  
Slovénie  
Suède  
R. Tchèque

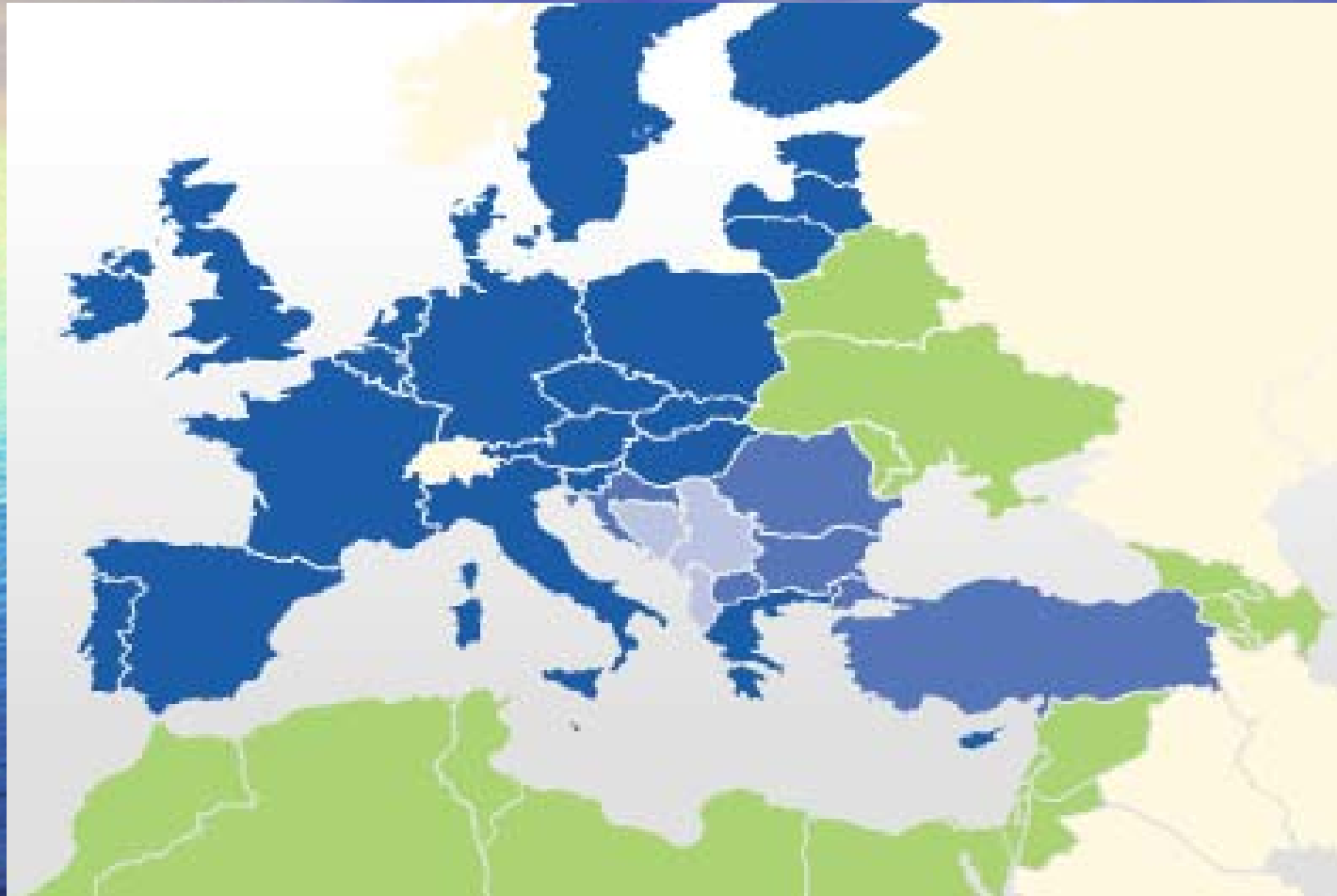
## 10 Pays Associés

Croatie (C)  
Islande (AELE)  
Israël  
Liechtenstein (AELE)  
Macédoine (C)  
Monténégro (CP)  
Norvège (AELE)  
Serbie (CP/CE)  
Suisse (AELE)  
Turquie (C)

## 14 Pays Tiers

Albanie (CP/CE)  
Andorre (CE)  
Arménie (CE)  
Azerbaïdjan (CE)  
Biélorussie  
Bosnie (CP/CE)  
Georgie (CE)  
Kazakhstan  
Moldavie (CE)  
Monaco (CE)  
Russie (CE)  
Saint Marin (CE)  
Ukraine (CE)  
Vatican

# POLITIQUE DE VOISINAGE



Maroc  
Algérie  
Tunisie  
Libye  
Egypte

Jordanie  
Palestine  
Syrie  
Liban  
Israël

Arménie  
Azerbaïdjan  
Géorgie

Moldavie  
Ukraine  
Biélorussie

# METHODE D'EVALUATION

8 Panels disciplinaires

3 évaluateurs + Observateurs indépendants

Confidentialité, Conflits d'intérêts...

Rapport d'évaluation

Réunion de consensus

Les rapports d'évaluation des projets déjà soumis sont  
communiqués aux experts

# PANELS D'EVALUATION

## Scientific Panels - Sub-disciplines

To help you in selecting the most relevant panel code please find below a breakdown of each scientific area:

### CHEMISTRY (CHE)

- Biological, Pharmaceutical and Medicinal Chemistry
- Environmental Chemistry
- Homogeneous and Heterogeneous Catalysis
- Instrumental Techniques, Analysis, Sensors
- Molecular Aspects of New Materials, Macromolecules, Supramolecular Structures, Nanochemistry
- New Synthesis, Combinatorial Chemistry
- Reaction Mechanisms and Dynamics
- Surface Science and Colloids
- Theoretical and Computational chemistry
- Other Chemistry

- Ecology and Evolution (incl. Population Biology)
- Environmental Engineering and Geotechnics
- Fisheries and Aquaculture
- Geochemistry and Mineral Sciences
- Geophysics, Tectonics, Seismology, Volcanology
- Marine Sciences
- Natural Resources Exploration and Exploitation
- Physical Geography, Earth Observation and Remote Sensing
- Pollution, Waste Disposal and Ecotoxicology
- Soil and Water Processes
- Stratigraphy, Sedimentary Processes and Palaeontology
- Other Environment and Geosciences

### SOCIAL & HUMAN SCIENCES (SOC)

- Education and Training
- Law (European or Comparative National)
- Linguistics (applied to: Education, Industrial Efficiency or Social Cohesion)
- Media and Mass Communication
- Political Sciences (European or Comparative National)
- Psychology (Social, Industrial, Labour, or Education)
- Sociology
- Other Social and Human Sciences

### LIFE SCIENCES (LIF)

- Bioenergetics
- Biological Membranes
- Biomedicine, Public Health & Epidemiology
- Cancer Research
- Cell Biology
- Computational Biology and Bioinformatics
- Developmental Biology
- Enzymology
- Genetic Engineering
- Genomics and General Genetics
- Immunology
- Macromolecular Structures and Molecular Biophysics
- Medical Pathology
- Metabolic Regulation and Signal Transduction
- Metabolism of Cellular Macromolecules
- Microbiology and Parasitology
- Neurosciences (incl. Psychiatry and Clinical Psychology)
- Pharmacology and Toxicology
- Physiology
- Virology
- Other Life Sciences

### ECONOMIC SCIENCES (ECO)

- Financial Sciences
- Industrial Economics (incl. Technology & Innovation)
- International Economics
- Labour Economics
- Macroeconomics
- Management of Enterprises (incl. Marketing)
- Microeconomics
- Natural Resources & Environmental Economics
- Public Sector Economics
- Quantitative Methods
- Research Management
- Social Economics
- Urban & Regional Economics (incl.

### MATHEMATICS (MAT)

- Algebra and Number Theory
- Algorithms and Complexity

# RAPPORTS D'EVALUATION

## Evaluation Summary Report

Viewing: Evaluation Summary Report  
Panel: RTN-2005-2-ENV  
Proposal: 035798-2-MOUNTAIN-RISKS  
Date: 27/03/2006

Select version: 1

## Evaluation Summary Report – STAGE 2 For a Marie Curie Research Training Network (RTN)

### TOTAL SCORE

(Threshold: 70/100) **91.7**

### Has the proposal passed all thresholds?

**NO**

### Does this proposal raise ethical issues? (Please refer to the list of issues in the Ethical Issues Report (EIR))

**NO**

### If yes, please indicate (after completing the EIR Form) if this proposal should be referred to the Ethical Review Panel

**NO**

### Recommendations for Project Negotiation:

Recommendations for project negotiation and/or indicators to monitor progress of project (if funded), for Commission use only :

It is strongly recommended that the network should be opened to New Member States or Associated Candidate Countries because there is an obvious need for such studies in those countries.

### Criterion 1. SCIENTIFIC QUALITY OF THE COLLABORATIVE PROJECT

- Strengths of the proposal (in bullet point format):
- Weaknesses of the proposal (in bullet point format):
- Overall comments:

(reflecting the relative importance of the strength and weaknesses above mentioned)

- For resubmitted projects only:

Please explain possible discrepancies between this ESR and previous ESR(s), with particular attention being paid to whether or not the proposal addresses the issue(s) raised by the expert evaluators in the previous evaluation(s)?

Strengths of the proposal (in bullet point format):

? S&T objectives of the project are well specified for each of the five study areas, revealing a multidisciplinary approach (geology, geomorphology, civil engineering, forestry, geography, economy and land use planning), and intersectoral aspects (two of the twelve partners are SMEs) in a clear attempt to overcome European fragmentation in a research field of major interest.

partners contributions, and links between the 19 specific tasks are described

? The project novelty mainly stands in the research synergy. Joining the efforts of all actors involved in the mountain risk management is of major relevance. Involving the study of legal aspects for implementing research results is of highest interest.

? The project is largely based on the excellent knowledge of the state-of-the-art, very well supported by appropriate references.

Weaknesses of the proposal (in bullet point format):

? Sometimes redundancy and some incoherency are present in the text.

? Snow avalanches should be more explained and included in the programme.

Overall comments:

(e.g. to reflect the relative importance of the strength and weaknesses above mentioned)

? On the overall, a very good research proposal, timely and relevant for ERA. Some significant innovative aspects are described

? The proposal should be better structured in description.

**Overall score** (Threshold: 3/5, Weight: 15) **4.6**

### Criterion 2. QUALITY OF THE TRAINING / TRANSFER OF KNOWLEDGE (ToK) ACTIVITIES

- Strengths of the proposal (in bullet point format):
- Weaknesses of the proposal (in bullet point format):
- Overall comments:

(reflecting the relative importance of the strength and weaknesses above mentioned)

- For resubmitted projects only:

Please explain possible discrepancies between this ESR and previous ESR(s), with particular attention being paid to whether or not the proposal addresses the issue(s) raised by the expert evaluators in the previous evaluation(s)?

Strengths of the proposal (in bullet point format):

? Training plans and ToK activities are systematic and accurately described in the proposal. ESRs training for research through research are nicely outlined. PhD programs at their host institutions are in tight connection with project tasks. Various forms for individual training are described. TOK activities and specific position for each ERs employed by the project are also thoroughly described in connection with project objectives.

? A complex training program is described in the proposal by emphasizing its multidisciplinary and intersectoral aspects. Plans for the secondments of each ESRs are clearly described showing how the candidates will be trained in various fields and/or exposed to various "school of thoughts". There is an excellent ratio ESRs/ERs (360/144 person-months). Needs for ToK are well specified.

? Various local training with complex network-wide actions is combined. Intensive courses with clear organizers and schedules, topic workshops, annual meetings, attendance at international conferences, etc. are thoroughly described. A final Conference on Mountain Risk Management to be held near the end of the project is foreseen. Thorough Career Development Plans for each ESR will be achieved at the beginning of the process, and continuously adapted during the training period.

? Candidates will benefit from a complex complementary training providing them with various additional skills: communication, project management, intellectual and industry property rights, normalisation, etc. A large pool of specialists in the mountain risk assessment & management is needed at the EU scale and a need increase is foreseen.

Weaknesses of the proposal (in bullet point format):

The role played by ERs, and ToK activities in the ESRs training should be more thoroughly described.

Overall comments:

(e.g. to reflect the relative importance of the strength and weaknesses above mentioned)

? The training has strong interdisciplinary and intersectoral character, and looks adapted to the audience, fulfilling the MC-RTN requirements. It will offer an increase and broadening of the candidates expertise and help them getting a position of professional maturity.

**Overall score** (Threshold: 4/5, Weight: 20) **4.6**

### Criterion 3. QUALITY/CAPACITY OF THE NETWORK PARTNERSHIP

- Strengths of the proposal (in bullet point format):
- Weaknesses of the proposal (in bullet point format):
- Overall comments:

(reflecting the relative importance of the strength and weaknesses above mentioned)

- For resubmitted projects only:

# CRITERES D'EVALUATION

Activity	Industry-Academia Partnerships		International Outgoing Fellowships		International Incoming Fellowships		International Reintegration Grants	
	W	T	W	T	W	T	W	T
<b>W=Weight</b> <b>T=</b>								
<b>S&amp;T Quality</b>	25	3	25	3	25	3	30	3
<b>Training</b>	20	3	15	3	15	N/A	N/A	N/A
<b>Researcher</b>	N/A	N/A	25	4	25	4	30	3
<b>Implement.</b>	25	3	15	N/A	15	N/A	20	N/A
<b>Impact</b>	30	N/A	20	N/A	20	N/A	20	N/A

- 0 - The proposal fails to address the criterion under examination or cannot be judged due to missing or incomplete information
- 1 - **Very poor.** The criterion is addressed in a cursory and unsatisfactory manner.
- 2 - **Poor.** There are serious inherent weaknesses in relation to the criterion in question.
- 3 - **Fair.** While the proposal broadly addresses the criterion, there are significant weaknesses that would need correcting.
- 4 - **Good.** The proposal addresses the criterion well, although certain improvements are possible.
- 5 - **Excellent.** The proposal successfully addresses all relevant aspects of the criterion in question. Any shortcomings are minor.

# CRITERES D'EVALUATION

## Funding Scheme "Support for Training and Career Development of Researchers"; Marie Curie Initial Training Networks

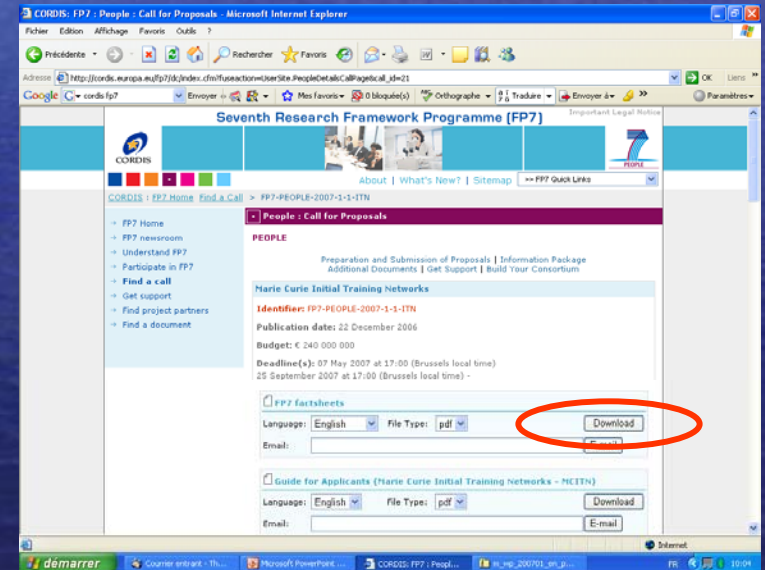
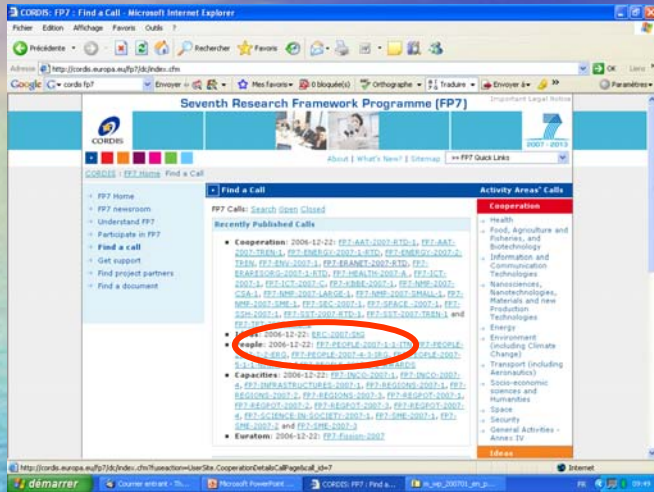
S&T Quality (award)	Training (award)	Researcher (award)	Implementation (selection)	Impact (award)
S&T objectives of the research programme, including in terms of inter/multi-disciplinary, intersectorial and/ or newly emerging supra-disciplinary fields.	Quality of the training programme. Consistency with the research programme. Complementary skills offered: Management, Communication, IPR, Ethics, Grant writing, Commercial exploitation of results, Research Policy, entrepreneurship, etc.		Capacities (expertise / human resources/ facilities / infrastructures) to achieve the research, and adequate task distribution and schedule.	Contribution of the proposed training programme to improvement of the career prospects of the fellows.
Scientific quality of the research programme .	Importance and timeliness of the training needs (e.g. multidisciplinary, intersectorial , and newly emerging supra-disciplinary fields)		Appropriateness of industry involvement.	Provision to establish longer term collaborations and /or lasting structured training programme between the partners' organizations, including between private and academic partners.
Appropriateness of research methodology.	a) For multi-site proposals: Adequate combination of local specialist training with network-wide training activities.  b) For mono-site proposals: Adequate exploitation of the international network of the participants for the training programme.		Adequate exploitation of complementarities and synergies among partners in terms of research and training.	Where appropriate, justification of the training events open to external participants and their integration in the training programme.
Originality and innovative aspect of the research programme. Knowledge of the state-of-the-art.	Appropriateness of the size of the requested training programme with respect to the capacity of the host		How essential is non-ICPC Third Country participation, if any, to the objectives of the research training programme.	Where appropriate, mutual recognition of the training acquired by multi-partner hosts.
			Appropriateness of the plans for the overall management of the training programme (demarcation of responsibilities, rules for decision making, etc.).	Where applicable, relevance of the role of visiting scientist with respect to the training programme.
			Networking and dissemination of best practice among partners. Clarity of the plan for organizing training events (workshops, conferences, training courses).	
			Clarity of the recruitment strategy (including time table), based on competitive international recruitment and incorporating an equal opportunity policy. Coherence of the conditions of recruitment and employment with the principles of the "Code of Conduct for the recruitment of researchers".	

# CRITERES D'EVALUATION

S&T Quality (award)	Training (award)
Scientific/technological quality, including any interdisciplinary and multidisciplinary aspects of the proposal	Clarity and quality of the research training objectives for the researcher
Research methodology	Relevance and quality of additional scientific training as well as of complementary skills offered
Originality and innovative nature of the project, and relationship to the 'state of the art' of research in the field	Host expertise in training experienced researchers in the field and capacity to provide mentoring/tutoring
Timeliness and relevance of the project	
Host scientific expertise in the field	
Quality of the group/supervisors	

# MONTAGE DU DOSSIER

<http://cordis.europa.eu/fp7/dc/index.cfm>



## Téléchargement de fichier

Voulez-vous ouvrir ou enregistrer ce fichier ?



Nom: m\_wp\_200701\_en\_pdf.zip  
Type: Dossier compressé  
Source: ftp.cordis.lu

Ouvrir Enregistrer Annuler

Toujours demander avant d'ouvrir ce type de fichier

Si les fichiers téléchargés depuis Internet sont utiles, certains fichiers peuvent présenter des risques pour votre ordinateur. N'ouvrez pas ou n'enregistrez pas ce fichier si vous n'êtes pas sûr de son origine. [Quels sont les risques ?](#)

## Guide for Applicants (Marie Curie Initial Training Networks - MCITN)

Language: English File Type: pdf Download E-mail



# MONTAGE DU DOSSIER

The Marie Curie Actions

Guide for Applicants for Marie Curie Initial Training Networks  
FP7-PEOPLE-2007-1-1-ITN



## PROVISIONAL GUIDE FOR APPLICANTS

Marie Curie Actions  
*People*

**Marie Curie Initial Training Networks**

Call identifier FP7-PEOPLE-2007-1-1-ITN  
Closure Date: 7 May 2007 at 17:00 (Brussels local time)

Edition: December 2006

**PROVISIONAL WORK PROGRAMME 2007<sup>1</sup>**

***PEOPLE***

***(European Commission C(2006) 6844)***

<sup>1</sup> This provisional work programme is subject to formal confirmation following the entry into force of the 7<sup>th</sup> EC Framework Programme and the Specific Programme People.

<sup>2</sup> In accordance with Articles 163 to 173 of the EC Treaty, and in particular Article 166(1) as contextualised in the following decisions: Decision XXXX/2006/CE of the European Parliament and of the Council of XX/12/2006 concerning the 7<sup>th</sup> Framework Programme of the European Community for Research, Technological Development and Demonstration (2007 – 2013) and the Council Decision XXXX/2006/CE of XX/12/2006 adopting a Specific Programme for Research, Technological

# MONTAGE DU DOSSIER (Partie A)

Proposal Submission Forms	
EUROPEAN COMMISSION 7 <sup>th</sup> Framework Programme on Research, Technological Development and Demonstration	Marie Curie Actions Initial Training Networks (ITN)
<b>A1</b>	
Proposal Number	Proposal Acronym
GENERAL INFORMATION ON THE PROPOSAL	
Proposal Title	
Marie Curie action-code	Scientific Panel
Total duration in months	Call identifier
Keywords (up to 200 characters)	
Abstract (up to 2000 characters)	
Has a similar proposal been submitted to a Marie Curie Action under this or previous RTD Framework Programmes? YES/NO	
If yes:	
Programme name(s) and year	Proposal number(s)
Does this proposal include any of the sensitive ethical issues detailed in the Research Ethical Issues table of Part B? YES/NO	

Proposal Submission Forms	
EUROPEAN COMMISSION 7 <sup>th</sup> Framework Programme on Research, Technological Development and Demonstration	Marie Curie Actions Initial Training Networks (ITN) Stage 1 Proposals
<b>A2</b>	
Proposal Nr	Proposal Acronym
Participant Nr	
INFORMATION ON ORGANISATIONS	
If your organisation has already registered for FP7, enter your Participant Identity Code (PIC or 'none')	
Organisation legal name	
Organisation short name	
Administrative data	
Legal address	
Street name	Number
Town	
Postal Code / Codex	
Country	
Internet homepage (optional)	
Status of your organisation	
Certain types of organisations benefit from special conditions under the FP7 participation rules. The Commission also collects data for statistical purposes. The guidance notes will help you complete this section. Please 'tick' the relevant box(es) if your organisation falls into one or more of the following categories.	
Non-profit organisation	<input type="checkbox"/>
Public body	<input type="checkbox"/>
Research organisation	<input type="checkbox"/>
Higher or secondary education establishment	<input type="checkbox"/>
International organisation	<input type="checkbox"/>
International European Interest organisation	<input type="checkbox"/>
Joint Research Center of the European Commission	<input type="checkbox"/>
Entities composed of one or more legal entities [European Economic Interest Group/ Joint Research unit (Unité mixte de recherche) / Enterprise groupings]	<input type="checkbox"/>
Commercial Enterprise	<input type="checkbox"/>
Main area of activity (NACE code): [dropdown list]	
The following section relating to the status of Small or Medium Sized Enterprises is to be completed only by the participants having chosen NONE of the options in the first section under "Status of your organisation"	
1. Is your number of employees smaller than 250? (full time equivalent)	[yes/no]
2. Is your annual turnover smaller than € 50 million?	[yes/no]
3. Is your annual balance sheet total smaller than € 43 million?	[yes/no]
4. Are you an autonomous legal entity?	[yes/no]
You are <b>not</b> an SME if your answer to question 1 is "NO" and/or your answer to both questions 2 and 3 is "NO". In all other cases, you might conform to the Commission's definition of an SME. Please check the additional conditions given in annex X.	
Following this check, do you conform to the Commission's definition of an SME	[yes/no]

# MONTAGE DU DOSSIER (Partie B)

## Part B -Table of Contents

To draft PART B of proposals applicants should take into account the following structure and subheadings.

If required for an adequate description of their project, applicants may wish to add further headings.

### B1 SCIENTIFIC AND TECHNOLOGICAL QUALITY

- Scientific and technological Quality, including any interdisciplinary and multidisciplinary aspects of the proposal
- Research methodology
- Originality and innovative nature of the project, and relationship to the 'state of the art' of research in the field
- Timeliness and relevance of the project
- Host scientific expertise in the field
- Quality of the group/supervisors

### B2 TRAINING

- Clarity and quality of the research training objectives for the researcher
- Relevance and quality of additional scientific training as well as of complementary skills offered
- Host expertise in training experienced researchers in the field and capacity to provide mentoring/tutoring

### B3 RESEARCHER

- Research experience
- Research results
- Independent thinking and leadership qualities
- Match between the fellow's profile and project
- Potential for reaching a position of professional maturity
- Potential to acquire new knowledge

### B4 IMPLEMENTATION

- Quality of infrastructures/facilities and international collaborations of host
- Practical arrangements for the implementation and management of the project
- Feasibility and credibility of the project, including work plan
- Practical and administrative arrangements and support for the hosting of the fellow

### B5 IMPACT

- Potential of acquiring competencies
- Contribution to career development or re-establishment
- Contribution to European excellence and European competitiveness

### B6 ETHICAL ISSUES

# MONTAGE DU DOSSIER

## Proposal language

The working language of the expert evaluators is English and it is recommended that proposals are prepared in English. However, Proposals may be prepared in any official language of the European Union. If your proposal is not in English, a translation of the full proposal would be of assistance to the experts. An English translation of the abstract must be included in Part A of the proposal

## Multiple Submissions

*Applicant **researchers** are reminded that only **one** proposal may be submitted in an evaluation procedure **at any one time** for any of the following actions (this restriction does not apply to host organisations):*

- Marie Curie Intra-European Fellowships for Career Development(IEF),
- Marie Curie International Outgoing Fellowships (IOF),
- Marie Curie International Incoming Fellowships (IIF),
- Marie Curie International Reintegration Grants (IRG)
- Marie Curie European Reintegration Grants (ERG)

# SOUMMISSION ELECTRONIQUE

EPSS FP7: Welcome - Mozilla Firefox

https://www.epss-fp7.org/epss/welcome.jsp

Electronic Proposal Submission Service (EPSS) Important Legal Notice

CORDIS: EPSS

**Important notice**

**Important notice for applicants for the Marie Curie calls published on 22 December and 28 February:**

The Guides for Applicants have been updated since these calls were published. Please make sure therefore that you **download the final Guide for Applicants** from the CORDIS call page before proceeding with the proposal preparation.

**Welcome to EPSS, the Electronic Proposal Submission Service**

Call Selected: FP7-PEOPLE-2007-2-2-ERG  
Sub-Scheme Selected: MC-ERG

I am the **coordinator** of a proposal and I need a user name and a password → [REGISTER!](#)

I already have an **online** user name and a password → [LOGIN](#)

I am a **participant (not the coordinator)** in a proposal and I need a user name and password → [CONTACT YOUR COORDINATOR](#)

[EPSS user guide](#)

Terminé

www.epss-fp7.org

démarrer Courrier entrant - ... Microsoft PowerPoi... EPSS FP7: Welcom... NOTES PCN Adobe Acrobat - [... FR 11:23

Coordinateur / Login / Password / Fichier PDF

# CALENDRIER & PROCEDURES

## Rédaction de la proposition

le chercheur / le labo (EPSS)  
éventuellement avec une aide (externe/interne)

## Évaluation

panels d'experts de la Commission

## Négociation/Contractualisation

les services de la Commission avec les services de  
l'établissement d'accueil et le chercheur / le labo

## Rapports/Suivi

le chercheur / le labo (+ chef de projet)  
avec les services de l'établissement d'accueil



# RESULTATS EN 2006

Réseaux (ITN) : moins de 10%

Bourses individuelles (IEF, IIF, IOF) : 20%

Partenariats Industrie (IAPP) : 40%

Aides au retour (ERG, IRG) : 90%

Pour les bourses intra-européennes

Par nationalité: France, Espagne, Allemagne, Italie...

Par destination : Royaume Uni, France, Allemagne...

Pour les bourses entrantes

Chine, Russie, Inde...

# LIENS AVEC D'AUTRES POLITIQUES

## ERA-MORE

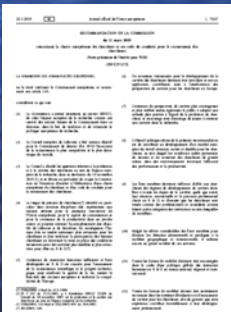
European Research Area - Mobility of Researchers  
European Network of Mobility Centers

**ERA-CAREERS** : <http://europa.eu.int/eracareers>  
European Portal for Researcher's mobility

**European Charter** for Researchers and  
Code of conduct for the recruitment of researchers

**ERA-Link** : <http://cordis.europa.eu/eralink/>  
Networking tool for European researchers in the US

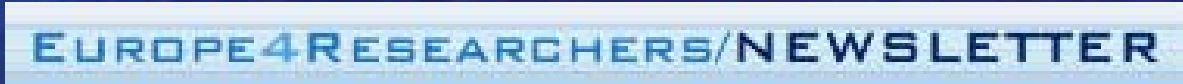
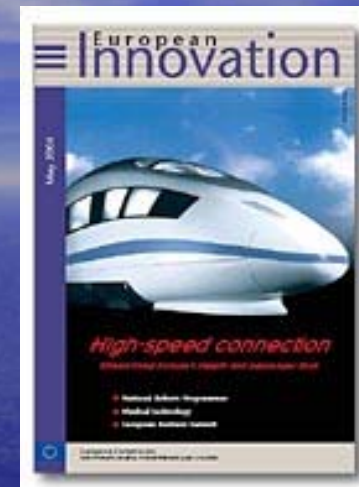
**Directive VISA** : obtention, renouvellement, entrées multiples  
convention d'accueil, informations, ressources...



**Prestations sociales (projets)**



# PUBLICATIONS UTILES



# LIENS UTILES

Projets financés et postes vacants

<http://mc-opportunities.cordis.lu>  
<http://cordis.europa.eu/fp6/projects.htm>

Point de Contact National

[stephane.aymard@univ-poitiers.fr](mailto:stephane.aymard@univ-poitiers.fr)

Marie Curie Fellowship Association

<http://www.mariecurie.org>



Eurosfair

<http://eurosfair.prd.fr>

